



BEST FOOT FORWARD
Bringing sustainability down to earth

One Day

Ecological Footprint Masterclass 2010

Training

Overview

Ecological footprinting is an environmental accounting technique which can help companies, regions and individuals to measure, manage, reduce and monitor their use of natural resources. Ecological footprinting is often used alongside carbon or greenhouse (GHG) accounting as it incorporates consideration of carbon emissions alongside other environmental impacts. This course clearly explains the key principles of the methodology, and provides hands on experience of its application. Best Foot Forward have been undertaking footprint analyses since 1997 and the material on this course draws from this long experience. The course is highly interactive and suitable for those with a responsibility for addressing sustainability at a strategic or management level, and for those with an interest in natural resource management. This course is designed to complement the Carbon Footprinting Masterclass offered by Best Foot Forward.

About Best Foot Forward

Best Foot Forward (BFF) is one of Europe's leading sustainability consultancies specialising in natural resource accounting methodologies, ecological footprinting and carbon accounting. BFF has completed well over 300 footprint projects which range in scope from a single apple from South Africa to the entire city of London. BFF is a founding member of the Global Footprint Network. In 2005 BFF was awarded a Queen's Award for Enterprise in the category of Sustainable Development.

Masterclass Introduction

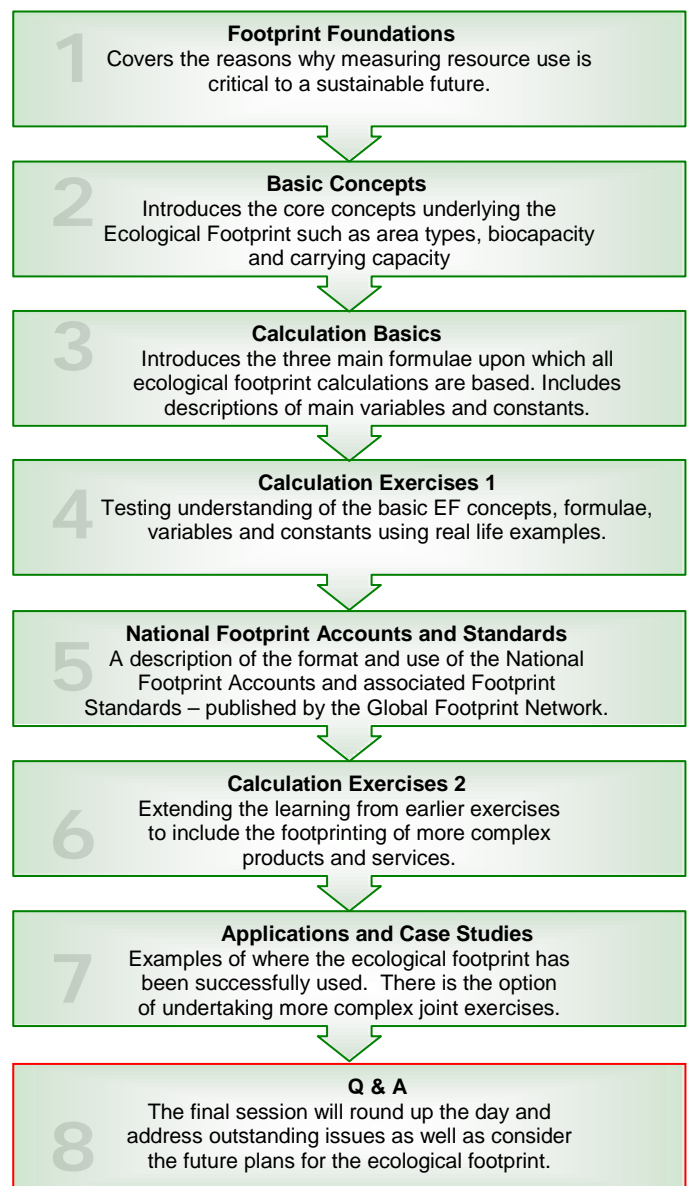
It is becoming increasingly clear that our economy is using many natural resources at unsustainable rates. The impacts of fossil fuel use on the climate are well known, but this is just part of the picture. Other categories of resources; metals, minerals and biomass-derived products are being consumed at levels which are degrading the natural environment. For example, forest cover is being lost, fisheries are being exhausted and soils are being eroded. One widely recognised measure of resource use is the ecological footprint. Whether you are interested in measuring and understanding the sustainability of lifestyles, communities, organisations or products, Ecological Footprinting can help support your decision-making. The Ecological Footprint Masterclass is a one day course that teaches participants the complexities of measurement and its practical application. Throughout the day there are interactive exercises to challenge participants and embed learning.

Learning outcomes

Participants will be able to:

- Understand the need for wider resource efficiency
- Link resource use to global biocapacity limits
- Identify the key elements of an ecological footprint
- Undertake footprint calculations from first principles
- Understand when and where to apply footprinting.

Course Structure



Course Tutors



Simon Miller is a principal consultant at Best Foot Forward. He works closely with clients initially to develop project plans and subsequently identify key opportunities from footprint analyses. Simon has led projects with over thirty clients including Radiohead, Herman Miller, WRAP, and Envirowise. Simon previously worked as a consultant at AEA specialising in ecodesign and water efficiency programmes. Simon holds MSc Environmental Sustainability and BSc Biology.



Craig Simmons is a co-founder and Director of Best Foot Forward. He has authored several books including *Sharing Nature's Interest* on ecological footprinting and *The ZEDBook*, a definitive guide to creating low carbon communities. Craig is a founding member of the Global Footprint Network and member of the International Footprint Standards Committee. He has written and lectured widely on environmental accounting methods.

Course Programme

The course is held in the dedicated training room in BFF's offices at 9 Newtec Place, Magdalen Road, Oxford, OX4 1RE, UK - directions can be found at www.bestfootforward.com. Coffee and registration will be at 9:00 – 9:30 am. The course will run from 9:30am to 4:30pm. Lunch and refreshments will be provided.

The next 2010 courses will be held on:

Monday 12th April

Thursday 9th December

Payment

The course costs £350 (+VAT), payable on booking. We offer a reduced price of £300 (+VAT) per course when two courses are booked for consecutive days.

Unfortunately we cannot accept credit card payments. Cheques should be made payable to Best Foot Forward Ltd or a BACS payment can be made to Best Foot Forward Ltd, Barclays Bank, Sort Code 20-65-18 Account Number 90904473. If a BACS reference code is available please email it to mail@bestfootforward.com to assist our payment tracking process.

A full refund can be obtained three weeks prior to the course and an 80% refund two weeks prior to the course. Otherwise the full fee is due.

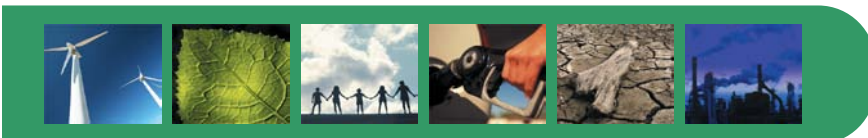
Any Questions?

Please contact us by e-mail at mail@bestfootforward.com or telephone us on +44 (0) 1865 250 818. Alternatively our fax number is + 44 (0) 1865 794 586.

Bookings

For bookings please contact us to reserve a place. Places will be held for two weeks pending receipt of the booking details and payment. Please either email the required information to mail@bestfootforward.com, fax the booking form to +44 (0) 1865 794 586, or post to:

Best Foot Forward,
The Future Centre
9 Newtec Place
Magdalen Road
Oxford
OX4 1RE



Ecological Footprint Masterclass Booking Form



Preferred Date: _____

Name: _____

Organisation: _____

Position: _____

Address: _____

Postcode: _____

Phone: _____

E-mail: _____

Dietary Requirements: _____

Access Requirements: _____

Payment method: _____

Signed: _____ Date: _____

Print name: _____

Unfortunately we cannot accept credit card payments. Cheques should be made payable to Best Foot Forward Ltd or a BACS payment can be made to Best Foot Forward Ltd, Barclays Bank, Sort Code 20-65-18 Account Number 90904473. If a BACS reference code is available please email to mail@bestfootforward.com to assist our payment tracking process.

A full refund can be obtained three weeks prior to the course and an 80% refund two weeks prior to the course. Otherwise the full fee is due.

BFF reserve the right to refuse any booking.